

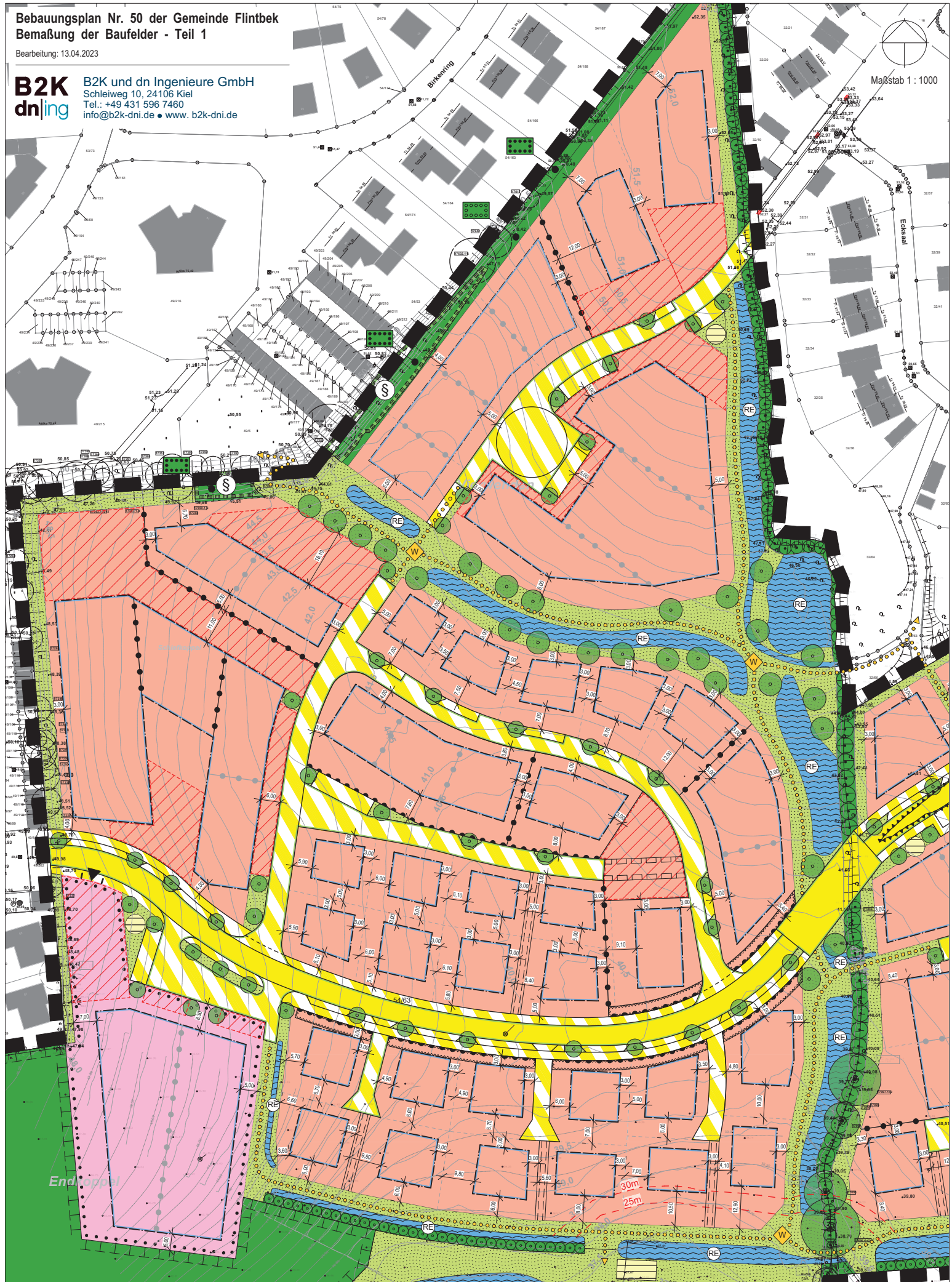
ENTWURF

Bebauungsplan Nr. 50 der Gemeinde Flintbek Bemaßung der Baufelder - Teil 1

Bearbeitung: 13.04.2023

B2K B2K und dn Ingenieure GmbH
dn|ing Schleiweg 10, 24106 Kiel
Tel.: +49 431 596 7460
info@b2k-dni.de • www. b2k-dni.de

Maßstab 1 : 1000



ENTWURF

Bebauungsplan Nr. 50 der Gemeinde Flintbek Bemaßung der Baufelder - Teil 2

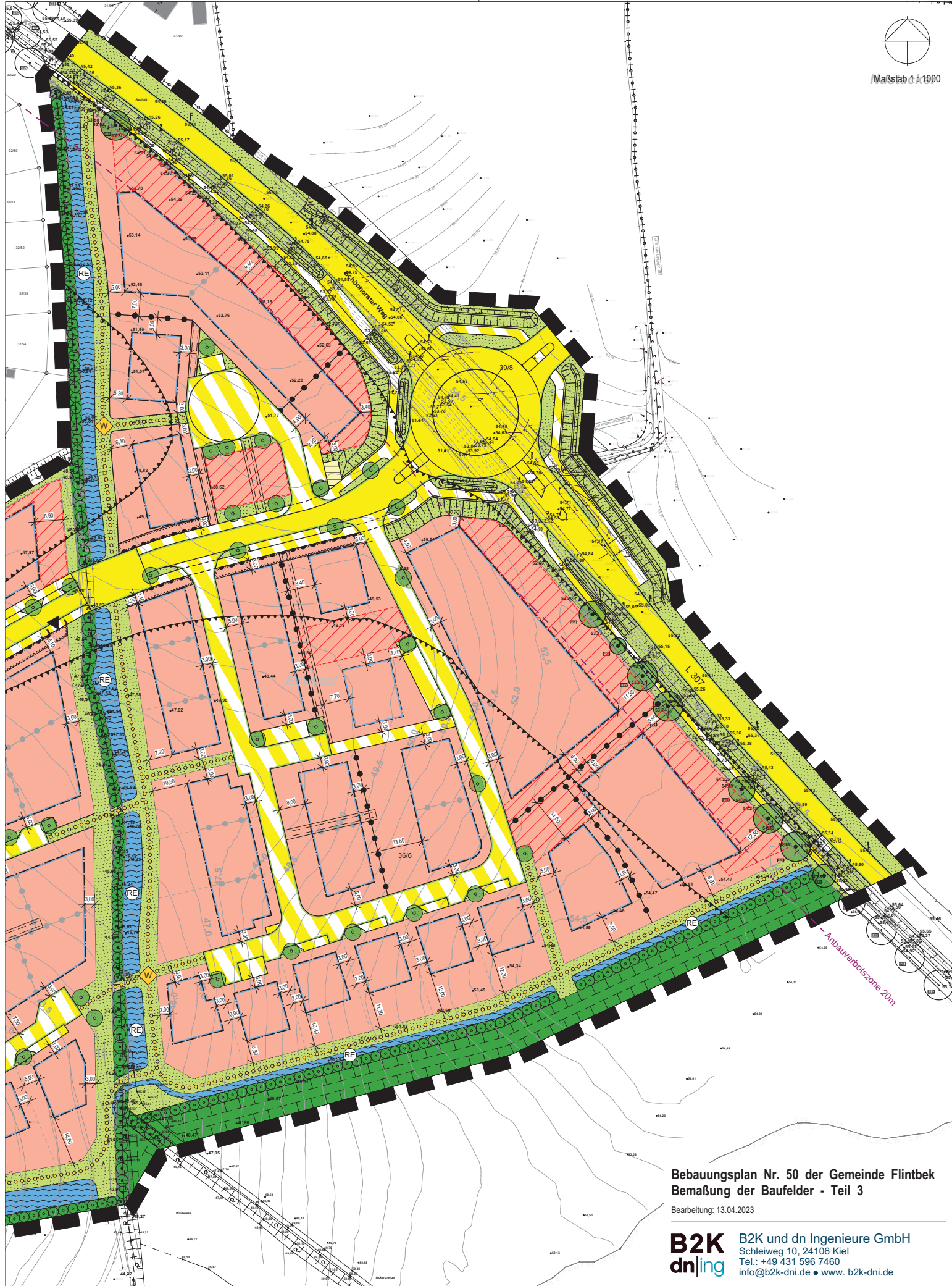
Bearbeitung: 13.04.2023

B2K dn|ing B2K und dn Ingenieure GmbH
Schleiweg 10, 24106 Kiel
Tel.: +49 431 596 7460
info@b2k-dni.de • www. b2k-dni.de



Maßstab 1 : 1000



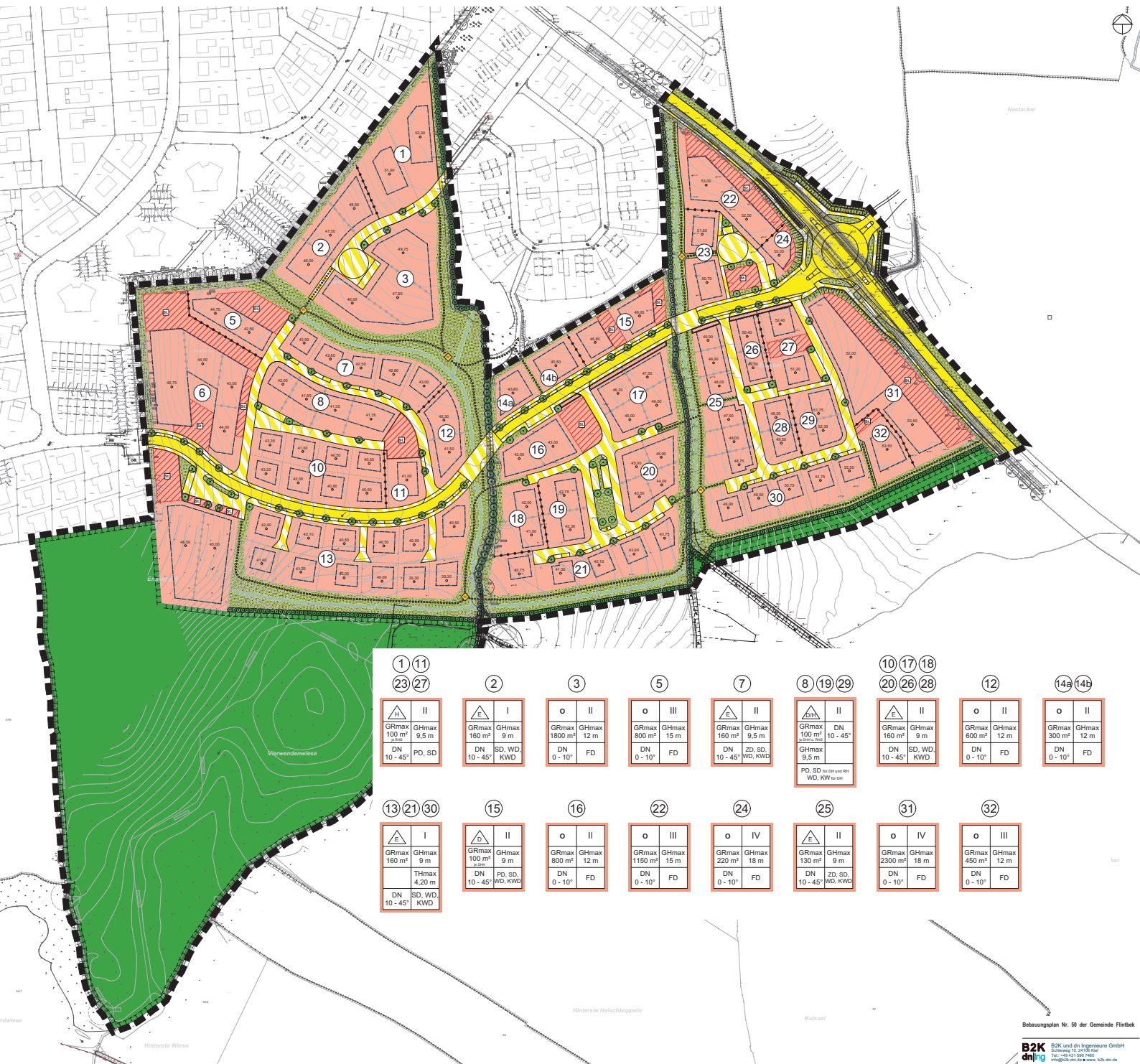


Bebauungsplan Nr. 50 der Gemeinde Flintbek
Bemaßung der Baufelder - Teil 3

Bearbeitung: 13.04.2023



B2K und dn Ingenieure GmbH
Schleiweg 10, 24106 Kiel
Tel.: +49 431 596 7460
info@b2k-dni.de • www.b2k-dni.de



<p>1 11 23 27</p> <table border="1"> <tr><td>△</td><td>II</td></tr> <tr><td>GRmax 100 m²</td><td>GHmax 9,5 m</td></tr> <tr><td>DN 10 - 45°</td><td>PD, SD</td></tr> </table>	△	II	GRmax 100 m²	GHmax 9,5 m	DN 10 - 45°	PD, SD	<p>2</p> <table border="1"> <tr><td>△</td><td>I</td></tr> <tr><td>GRmax 160 m²</td><td>GHmax 9 m</td></tr> <tr><td>DN 10 - 45°</td><td>SD, WD, KWD</td></tr> </table>	△	I	GRmax 160 m²	GHmax 9 m	DN 10 - 45°	SD, WD, KWD	<p>3</p> <table border="1"> <tr><td>o</td><td>II</td></tr> <tr><td>GRmax 1800 m²</td><td>GHmax 12 m</td></tr> <tr><td>DN 0 - 10°</td><td>FD</td></tr> </table>	o	II	GRmax 1800 m²	GHmax 12 m	DN 0 - 10°	FD	<p>5</p> <table border="1"> <tr><td>o</td><td>III</td></tr> <tr><td>GRmax 800 m²</td><td>GHmax 15 m</td></tr> <tr><td>DN 0 - 10°</td><td>FD</td></tr> </table>	o	III	GRmax 800 m²	GHmax 15 m	DN 0 - 10°	FD	<p>7</p> <table border="1"> <tr><td>△</td><td>II</td></tr> <tr><td>GRmax 160 m²</td><td>GHmax 9,5 m</td></tr> <tr><td>DN 10 - 45°</td><td>ZD, SD, WD, KWD</td></tr> </table>	△	II	GRmax 160 m²	GHmax 9,5 m	DN 10 - 45°	ZD, SD, WD, KWD	<p>8 19 29</p> <table border="1"> <tr><td>△</td><td>II</td></tr> <tr><td>GRmax 100 m²</td><td>GHmax 9,5 m</td></tr> <tr><td>DN 10 - 45°</td><td></td></tr> <tr><td>GHmax 9,5 m</td><td></td></tr> <tr><td colspan="2">PD, SD für OH und RH WD, KW für OH</td></tr> </table>	△	II	GRmax 100 m²	GHmax 9,5 m	DN 10 - 45°		GHmax 9,5 m		PD, SD für OH und RH WD, KW für OH		<p>10 17 18 20 26 28</p> <table border="1"> <tr><td>△</td><td>II</td></tr> <tr><td>GRmax 160 m²</td><td>GHmax 9 m</td></tr> <tr><td>DN 10 - 45°</td><td>SD, WD, KWD</td></tr> </table>	△	II	GRmax 160 m²	GHmax 9 m	DN 10 - 45°	SD, WD, KWD	<p>12</p> <table border="1"> <tr><td>o</td><td>II</td></tr> <tr><td>GRmax 600 m²</td><td>GHmax 12 m</td></tr> <tr><td>DN 0 - 10°</td><td>FD</td></tr> </table>	o	II	GRmax 600 m²	GHmax 12 m	DN 0 - 10°	FD	<p>14a 14b</p> <table border="1"> <tr><td>o</td><td>II</td></tr> <tr><td>GRmax 300 m²</td><td>GHmax 12 m</td></tr> <tr><td>DN 0 - 10°</td><td>FD</td></tr> </table>	o	II	GRmax 300 m²	GHmax 12 m	DN 0 - 10°	FD
△	II																																																																	
GRmax 100 m²	GHmax 9,5 m																																																																	
DN 10 - 45°	PD, SD																																																																	
△	I																																																																	
GRmax 160 m²	GHmax 9 m																																																																	
DN 10 - 45°	SD, WD, KWD																																																																	
o	II																																																																	
GRmax 1800 m²	GHmax 12 m																																																																	
DN 0 - 10°	FD																																																																	
o	III																																																																	
GRmax 800 m²	GHmax 15 m																																																																	
DN 0 - 10°	FD																																																																	
△	II																																																																	
GRmax 160 m²	GHmax 9,5 m																																																																	
DN 10 - 45°	ZD, SD, WD, KWD																																																																	
△	II																																																																	
GRmax 100 m²	GHmax 9,5 m																																																																	
DN 10 - 45°																																																																		
GHmax 9,5 m																																																																		
PD, SD für OH und RH WD, KW für OH																																																																		
△	II																																																																	
GRmax 160 m²	GHmax 9 m																																																																	
DN 10 - 45°	SD, WD, KWD																																																																	
o	II																																																																	
GRmax 600 m²	GHmax 12 m																																																																	
DN 0 - 10°	FD																																																																	
o	II																																																																	
GRmax 300 m²	GHmax 12 m																																																																	
DN 0 - 10°	FD																																																																	
<p>13 21 30</p> <table border="1"> <tr><td>△</td><td>I</td></tr> <tr><td>GRmax 160 m²</td><td>GHmax 9 m</td></tr> <tr><td>THmax 4,20 m</td><td></td></tr> <tr><td>DN 10 - 45°</td><td>SD, WD, KWD</td></tr> </table>	△	I	GRmax 160 m²	GHmax 9 m	THmax 4,20 m		DN 10 - 45°	SD, WD, KWD	<p>15</p> <table border="1"> <tr><td>△</td><td>II</td></tr> <tr><td>GRmax 100 m²</td><td>GHmax 9 m</td></tr> <tr><td>DN 10 - 45°</td><td>PD, SD, WD, KWD</td></tr> </table>	△	II	GRmax 100 m²	GHmax 9 m	DN 10 - 45°	PD, SD, WD, KWD	<p>16</p> <table border="1"> <tr><td>o</td><td>II</td></tr> <tr><td>GRmax 800 m²</td><td>GHmax 12 m</td></tr> <tr><td>DN 0 - 10°</td><td>FD</td></tr> </table>	o	II	GRmax 800 m²	GHmax 12 m	DN 0 - 10°	FD	<p>22</p> <table border="1"> <tr><td>o</td><td>III</td></tr> <tr><td>GRmax 1150 m²</td><td>GHmax 15 m</td></tr> <tr><td>DN 0 - 10°</td><td>FD</td></tr> </table>	o	III	GRmax 1150 m²	GHmax 15 m	DN 0 - 10°	FD	<p>24</p> <table border="1"> <tr><td>o</td><td>IV</td></tr> <tr><td>GRmax 220 m²</td><td>GHmax 18 m</td></tr> <tr><td>DN 0 - 10°</td><td>FD</td></tr> </table>	o	IV	GRmax 220 m²	GHmax 18 m	DN 0 - 10°	FD	<p>25</p> <table border="1"> <tr><td>△</td><td>II</td></tr> <tr><td>GRmax 130 m²</td><td>GHmax 9 m</td></tr> <tr><td>DN 10 - 45°</td><td>ZD, SD, WD, KWD</td></tr> </table>	△	II	GRmax 130 m²	GHmax 9 m	DN 10 - 45°	ZD, SD, WD, KWD	<p>31</p> <table border="1"> <tr><td>o</td><td>IV</td></tr> <tr><td>GRmax 2300 m²</td><td>GHmax 18 m</td></tr> <tr><td>DN 0 - 10°</td><td>FD</td></tr> </table>	o	IV	GRmax 2300 m²	GHmax 18 m	DN 0 - 10°	FD	<p>32</p> <table border="1"> <tr><td>o</td><td>III</td></tr> <tr><td>GRmax 450 m²</td><td>GHmax 12 m</td></tr> <tr><td>DN 0 - 10°</td><td>FD</td></tr> </table>	o	III	GRmax 450 m²	GHmax 12 m	DN 0 - 10°	FD									
△	I																																																																	
GRmax 160 m²	GHmax 9 m																																																																	
THmax 4,20 m																																																																		
DN 10 - 45°	SD, WD, KWD																																																																	
△	II																																																																	
GRmax 100 m²	GHmax 9 m																																																																	
DN 10 - 45°	PD, SD, WD, KWD																																																																	
o	II																																																																	
GRmax 800 m²	GHmax 12 m																																																																	
DN 0 - 10°	FD																																																																	
o	III																																																																	
GRmax 1150 m²	GHmax 15 m																																																																	
DN 0 - 10°	FD																																																																	
o	IV																																																																	
GRmax 220 m²	GHmax 18 m																																																																	
DN 0 - 10°	FD																																																																	
△	II																																																																	
GRmax 130 m²	GHmax 9 m																																																																	
DN 10 - 45°	ZD, SD, WD, KWD																																																																	
o	IV																																																																	
GRmax 2300 m²	GHmax 18 m																																																																	
DN 0 - 10°	FD																																																																	
o	III																																																																	
GRmax 450 m²	GHmax 12 m																																																																	
DN 0 - 10°	FD																																																																	